



TRUST WAIKATO
TE PUNA O WAIKATO

ANNUAL REPORT 2011/2012

HAERE MAI WELCOME

*It is our privilege to
present the 24th Annual
Report of Trust Waikato*

Trust Waikato supports the things that make our corner of the world a better place. We donate money to community organisations and projects that focus on welfare, sport, recreation, youth, art, culture and the environment, for the benefit of people in our region.

Our funding area includes the districts of Thames-Coromandel, Hauraki, Matamata-Piako, Waipa, Waikato, South Waikato, Waitomo, Otorohanga, Ruapehu and Hamilton City. We acknowledge that this area includes much of the lands of the Tainui waka and thus the people of Waikato, Raukawa, Hauraki and Maniapoto.

Our Strategic Plan for 2011 – 2013 has guided our work over the past year in the following ways:

Our Vision is for resilient and vibrant communities
Ko tō mātou moemoea kia tipu, kia hua ngā hāpori

Our Mission is to invest wisely and to donate effectively

- By valuing the current and future worth of the Trust's resources
- By valuing and respecting Māori as Tangata Whenua
- By valuing and recognising cultural diversity
- By valuing and promoting community development
- By valuing and facilitating community organisations

Donation areas of focus

- Supporting families and young people
- Encouraging participation and inclusion
- Supporting volunteers
- Supporting Iwi and Māori communities
- Preserving and celebrating cultural identity
- Building resilient communities
- Strengthening community groups

We care about

Kaitiakitanga - guardianship

Tika - fairness, rightness

Manaakitanga - respect, kindness to people

Whanaungatanga - kinship, relationship, sense of connection



CONTENTS

Highlights	4
Chair's Report	5
Donation Stories	6
Taumarunui Dinner @ the Domain	6
Para Kore Marae	8
Hamilton Christian Nightshelter Trust	9
Pasifika By Nature	10
Surf Lifesaving Clubs	11
Strategic Funding Partnerships	12
In the Spotlight: Poverty Action Waikato	13
Donating Effectively	14
Investing Wisely	15
Summarised financial statements for year ended 31 March 2012	16
Donations 2011/2012	23
Preserving Art and Taonga	35



TRUST WAIKATO
TE PUNA O WAIKATO



HIGHLIGHTS

*Over the last year,
Trust Waikato has*

Returned 6.07% on investment; Trust fund valued at over \$261.5million as at 31 March 2012

Reviewed our financial and investment governance

Hosted a Responsible Investment Engagement forum

Reached a significant milestone of donating over \$125million since its inception in 1988

Donated \$7.08million to over 750 community groups and projects across the region

Donated \$500,000 to South Waikato District Council for the South Waikato Sport and Events Centre

Established a strategic funding partnership with Volunteering Waikato

Focused on building funding relationships in Taumarunui and supported Dinner @ the Domain

Convened Our Workforce: Our Youth forum

Held Community Catch-up meetings in Morrinsville, Ngaruawahia, Te Awamutu and Waihi and our 2011 Annual Public Meeting in Thames

Delivered over 20 funding workshops across the region

Demonstrated the Trust's commitment to purchasing art and taonga special to the region by adding 8 new pieces to the Trust Art and Taonga Collection

CHAIR'S REPORT

TENA KOUTOU KATOA – GREETINGS TO YOU ALL

I AM PLEASED TO REPORT ON THE ACTIVITIES OF TRUST WAIKATO FOR THE YEAR ENDED 31 MARCH 2012.

Trust Waikato has a vision of resilient and vibrant communities throughout the region it serves. In contributing to that vision, the Trust aims to invest wisely the capital fund with which it is entrusted and to donate effectively the proceeds of those investments to benefit current and future communities.

Investing wisely

The Trust's investments returned 6.07% in the financial year and at 31 March 2012 the Trust assets were valued at over \$261.5million. Established in perpetuity, the Trust aims to grow the value of the capital fund to keep pace with both inflation and population growth in the region, as much as possible, so that the fund is worth just as much for future generations as it is for current communities. At year end, the Trust had made significant progress in rebuilding the value of the capital fund following the falls during the global financial crisis, with some small distance still to go.

The Trust's investments are spread across a range of asset classes: global equities, Australasian equities, unlisted property, infrastructure, global fixed interest, New Zealand fixed interest and cash. The portfolio is well diversified by asset class and fund manager, with the allocation of assets designed to achieve the Trust's goals of long-term capital growth and current donations to communities. As a signatory to the Principles for Responsible Investment, the Trust continues to consider ways in which environmental, social and governance issues may impact on both investments and communities.

Donating effectively

At 31 March 2012, the Trust, since its inception in 1988, had donated more than \$125million to projects and groups around the region. During the 2011/2012 year, the Trust committed approximately \$7.08million of donations to a range of projects and not for profit organisations.

During the year the Trust continued to focus its donations on community groups and projects that support children and families, and those communities that struggle the most.

The Trust has established strategic partnerships with Poverty Action Waikato, Volunteering Waikato, Te Hauora o Ngati Haua and Hauraki Maori Trust Board, because their work fits closely with the donation priorities of the Trust. Three of the largest donations in 2011 went to Sport Waikato, Community Waikato and Arts Waikato, all of which contributed to building the capacity of the community and voluntary sector in its region.

Significant capital donations were made to the South Waikato District Council for the Sport and Events Centre in Tokoroa, the Hamilton Christian Men's Nightshelter and Te Whakaruruhau Maori Women's Refuge. At the same time, the Trust continues to make many small donations because it believes that an active community and voluntary sector encourages participation and inclusion in communities. The Trust contributes to a very wide range of sports, recreation, social service, community development, arts, cultural and environmental groups, in every part of its region.

Governing well

The Trust has a strong focus on effective governance with many opportunities provided for governance development. During the year, the Trust formally reviewed its financial and investment governance.

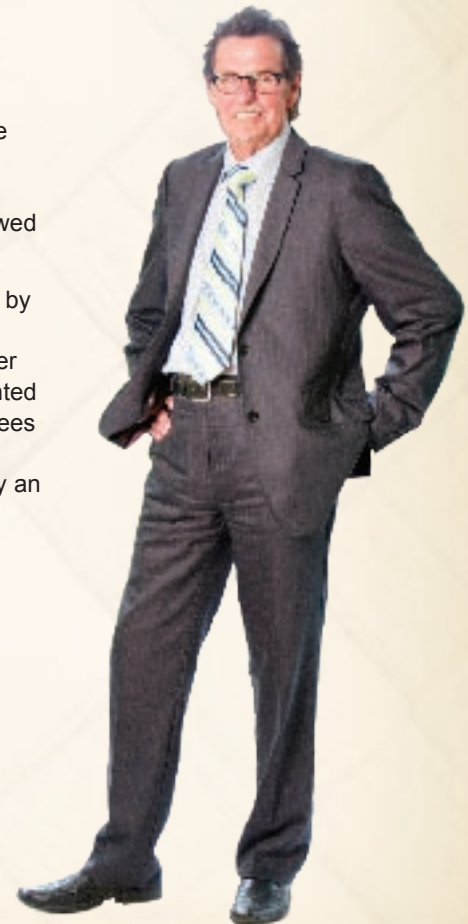
Trustees of Trust Waikato are appointed by the Minister of Finance. During the year, the term of Angus McConnell ended, after 4 years service. Judi Muru was reappointed for a second 4-year term. Two new trustees were appointed: Niwa Nuri and Lynnette Flowers. The Trust is also well-served by an able and dedicated group of staff.

Trust Waikato is privileged to serve the communities of our region both through investing the capital of the Trust and donating to the many community and voluntary groups that help build resilient and vibrant communities.



Clint Baddeley
Chair, Trust Waikato

“Trust Waikato is privileged to serve the communities of our region”



DONATION

TAUMARUNUI DINNER @ THE DOMAIN

“ It was a great honour for me to be able to work alongside so many community volunteers
RICHARD TILL ”

FEEDING 1,500 people was no problem for the community of Taumarunui (with some help from celebrity chef Richard Till), despite the event coinciding with the worst storm of the year.

The first-ever Taumarunui Dinner @ the Domain went ahead as planned on Saturday 3 March, as the town batted down its hatches in the face of a severe weather warning. A totally free event, where the people of Taumarunui were invited along to make and enjoy food together, Dinner @ the Domain was a true “celebration of food and community”.

And what a day it was! Food could be dropped off from midday on Friday, with preparation well underway by early Saturday morning. Children and families could enjoy games and other activities from 1pm, before the shared meal at 5:30pm. Although the weather meant many of the planned outdoor activities couldn't go ahead, people still came early to talk, be entertained and help out where needed.

Richard says, “That for me was the highlight of the day, how incredibly keen everyone was to get involved and lend a hand. It was a great honour for me to be able to work alongside so many community volunteers, putting in a long day side-by-side in the kitchen, making friends over the stove. That and the incredible hospitality showed to me by the people of Taumarunui.”

Event coordinator Briar van Buel from Heartland Services agrees that the people were what made the day. “In a way the weather made it even more of a success,” Briar says. “People were sitting down to share a fabulous meal in close quarters with strangers, and as a result a lot of new friends and connections were made. It was the same warm, homely atmosphere you get sharing food in your own kitchen.”

The sumptuous feast, prepared by many included four spit-roast pork, 400+ hangi, lasagne, salads, vegetable fritters, blueberry pies, cakes, individual trifles and more.



STORIES

The highlights of the day are many: the 1,800 broccoli, beetroots, lettuces, courgettes and other vegetables locally grown especially for the event; the waiata sung by Taumarunui Primary School students as they worked alongside Richard preparing vegetables for the hangi; the local taxis who plied the streets, giving people free rides to the dinner to beat the rain; the BMX displays, music, art projects and other family-friendly activities put on to entertain the waiting crowd; and the tables full of mouth-watering dishes dropped off by local cooks on the day.

For Trust Waikato, it was a wonderful opportunity to be involved in a more hands-on capacity. In addition to supporting the event with a \$21,000 donation and \$3,500 sponsorship, Trust Waikato staff and chair Clint Baddeley worked throughout the weekend (and for many months before) lending a hand wherever one was needed.

Chief Executive Bev Gatenby says, "What a wonderful day we had, working in the kitchen and witnessing first hand the connections and generosity in the Taumarunui community."

Dinner @ the Domain was one meal that the people of Taumarunui won't forget in a hurry. That's a good thing, because plans are already underway to repeat the celebration next year – this time (fingers crossed) with sunshine. Like Richard, Trust Waikato is honoured to have been part of Taumarunui Dinner @ the Domain.

“
It was a wonderful opportunity to be involved in a more hands-on capacity”



PARA KORE MARAE



“Marae are really enthusiastic about the programme”

HAVING nothing to show for its efforts, is the best possible outcome for the innovative Para Kore programme, which works with local marae to achieve zero waste. Since 2008, Para Kore has been pursuing its goal of all marae in Aotearoa being without waste by 2020.

Project manager Jacqui Forbes says, “Para Kore is very much grounded in traditional Maori beliefs of caring for Papatuanuku and Ranginui: riro taonga mai, hoki taonga atu – we receive valuable resources from Papatuanuku, we return valuable resources to her.”

Originally piloted on three marae in the central Waikato area, Para Kore has since provided waste minimisation education, services and support to over 25 marae. Another 50 marae are expected to take part in Para Kore over the next three years, with marae as far afield as Ohakune, Nelson, Tuwharetoa and Te Teko expressing an interest in coming on board.

Jacqui says, “Marae are really enthusiastic about the programme. They embrace its environmental values and it saves them money too. We’re seeing situations where marae now put out a couple of bags for collection following a major hui, whereas in the past there would have been whole ute-loads of rubbish going to the dump every day.”

“Hundreds of people are being educated and supported to change their behaviour – from putting waste all in the same bag, to sorting it all out – so that as little as possible is sent to landfill, and as much as possible is either recycled or composted.”

Another positive aspect of the programme is that it gains support as it goes. Several marae waste champions have become so enthused about zero waste they have trained as Para Kore advisors, and now deliver the programme at other marae.

Trust Waikato donated \$10,000 to Para Kore in 2011 so that it could keep on with its essential work in our region.



HAMILTON CHRISTIAN NIGHTSHELTER TRUST

A LONG-TERM aim for the Hamilton Christian Nightshelter Trust has recently come to fruition – to provide a fit-for-purpose men’s night shelter in the heart of Hamilton. The Trust has run separate men’s and women’s shelters in Hamilton since 1999 and 2004 respectively, but until recently the men’s one was housed in long-term temporary premises.

Trust chairperson Charles Flanagan says, “We will always be thankful to the owners of our old building, who leased it to us rent free, but we needed to find something larger and more suitable. The new shelter provides beds for up to 30 men, over double the number the old place could house. It’s somewhere that any of us could call home, if we needed to, and although we only opened our doors in April 2012, we’ve already seen a huge shift in guests’ attitudes. There’s a sense of pride and belonging, and obvious appreciation for the more comfortable accommodation.”

In addition to extra beds, the new shelter at 474 Anglesea Street has kitchen, lounge and shower facilities, and a seven-bed transitional unit, where people can stay until they find a place of their own.

Demand for the services is huge, with over 2,000 men using the shelter in the past five years. Charles says, “We are incredibly grateful for the generous contributions of our donors and funders, large and small. Without their support we could never have provided a facility like this, which benefits not just the city, but the broader Waikato region as well.”

The Trust now faces the challenge of paying the balance of the purchase price. It currently has a one-year low-interest vendor loan, which expires at the end of November 2012, at which point new funding sources will be needed.

Trust Waikato is proud to have played its part in supporting this essential community service. We granted two donations to the Hamilton Christian Nightshelter Trust in 2011: \$150,000 towards the new premises, and a \$15,000 operational grant.



“*There’s a sense of pride and belonging, and obvious appreciation*”



PASIFIKA BY NATURE

“ Seeing the festival become a major event that nurtures and grows Pasifika culture is a real highlight

”

USING song, music and performance to strengthen the identity of Pacific youth is the aim behind the annual Pasifika by Nature Secondary Schools Festival – an aim that is obviously finding its mark, as the festival grows, year-upon-year.

Pasifika by Nature secretary Mareta Ford says, “We believe the festival is unique, in that it fosters pride and understanding of our broader Pacific identity, not just the cultures that the individual students come from.”

Each of the participating schools gets 20 minutes on stage in which to perform items from three different cultures. “We’re seeing Cook Island students learning about and performing songs and dances from Samoa, Tonga, Fiji, Kiribati, Tokelau, Hawaii and Niue, and vice versa,” says Mareta.

This year, 10 schools from Hamilton, Tokoroa, and Rotorua took part and the venue, Founders Theatre in Hamilton, was at capacity.

“We even sold some of the seats reserved for the performers,” says Mareta. “Now we have schools from Tauranga wanting to join in, so we’ll probably have to look for somewhere bigger.”

Not bad for an event that started 15 years ago as the initiative of two students who wanted a platform for Pasifika youth to perform. From three schools in a school hall, the event has grown exponentially to an annual festival with over 400 performers and 850 tickets sold.

For Mareta, who has been involved since the outset, witnessing that evolution has been the best part. “Seeing the festival become a major event that nurtures and grows Pasifika culture is a real highlight.”

Trust Waikato donated \$6,000 towards Pasifika by Nature in 2011, which helped cover venue and other festival costs.



SURF LIFESAVING CLUBS

KEEPING the region's surf lifesaving clubs strong, so that our beaches remain safe, is the reason Trust Waikato both sponsors and donates to all nine Waikato clubs. Since 2000, Trust Waikato has provided three-yearly sponsorship for the clubs at Hot Water Beach, Onemana, Pauanui, Raglan, Sunset Beach, Tairua, Waihi, Whangamata and Whiritoa. It's an association we're proud of: a true life-saving partnership.

Trust Waikato chair Clint Baddeley says, "It's a privilege to be part of these organisations that save lives, engage young people, encourage volunteering, build community spirit and make lasting differences to people's lives – all the things Trust Waikato aims for."

With a primary aim of keeping people safe in the surf, the clubs put in a huge number of volunteer patrol hours during weekends and school holidays from Labour weekend through to Easter each year. Some of the more popular beaches attract thousands of visitors on a summer's day. It is not unusual for clubs to carry out hundreds of rescues and thousands of preventative actions during a season.

Apart from beach patrols, there are many other activities that make up a surf lifesaving club. Programmes often include first aid courses, VHF radio and inflatable rescue boat training, beach education days, search and rescue, and swim safe programmes for local schools. Annual junior surf programmes to teach kids surf skills and safety and foster rookie lifeguards, are also important parts of the clubs' work.

We believe the clubs' work is crucial. That's why Trust Waikato provided over \$100,000 in sponsorship last year, as well as project-specific donations for individual clubs.

“

It's a privilege to be part of these organisations that encourage volunteering, build community spirit and make lasting differences to people's lives”



STRATEGIC FUNDING PARTNERSHIPS

WE KNOW THAT COMMUNITIES UNDERSTAND THE NEEDS OF THEIR PEOPLE BETTER THAN ANYONE ELSE DOES; OUR ROLE IS SIMPLY TO WORK IN UNISON AND OFFER SOME CONTINUITY OF FUNDING.

Trust Waikato recognises the value in partnering with key organisations where there is a focus on shared values, principles and goals. This collaborative way of working enables the Trust to make a positive difference to some of the most pressing issues facing our communities and the community and voluntary sector.

POVERTY

Strategic Partner

POVERTY ACTION WAIKATO

Project

Action research and advocacy on issues of poverty in the Waikato region.

CAPACITY BUILDING

Strategic Partner

SPORT WAIKATO | COMMUNITY WAIKATO | ARTS WAIKATO

Project

Build the capacity of community organisations throughout the region, because great work in the community requires strong and viable community organisations.

SUPPORTING VOLUNTEERS

Strategic Partner

VOLUNTEERING WAIKATO

Project

Support, promote and encourage volunteering in the region, by extending Volunteering Waikato's work beyond Hamilton.

The aims of this project are two fold:

- To assist community organisations with their volunteering needs by accessing the services of Volunteering Waikato.
- To encourage people to participate in their communities by volunteering their time and skills.

SUPPORTING IWI

Strategic Partner

HAURAKI MAORI TRUST BOARD

Project

Marae Development Coordinator employed to support Hauraki marae in their projects and to gain access to funding and other services.

This dedicated role supports the Hauraki rohe comprising 25 marae and over 13,000 whānau members.

Marae have the opportunity to build capacity among whānau, and meet with funders and organisations that can assist them to achieve their aims and aspirations.

Strategic Partner

TE HAUORA O NGĀTI HĀUA TRUST

Project

Community Support Co-ordinator employed to provide community development support and build the capacity of Ngāti Hāua groups.

This dedicated resource is available to work with the 30 plus Ngāti Hāua community groups and 5 marae.

The project aims to create active and sustainable community groups that are responsive to their members and foster an environment that inspires growth, safety and well-being.



IN THE SPOTLIGHT POVERTY ACTION WAIKATO

THERE IS EVIDENCE THAT IF YOU REDUCE POVERTY YOU HAVE A POSITIVE EFFECT ON MANY OTHER CHALLENGES FOR FAMILIES.

Strategic Partner

POVERTY ACTION WAIKATO

Project

Improving the quality of life for families is important to Trust Waikato. In 2009 we set a goal to support community based research and advocacy aimed at reducing poverty in the region. Together with Anglican Action we hosted a public meeting in August 2009 to hear from our communities. The result was overwhelming support for a poverty research and advocacy project. The Waikato Poverty Action group was formed and a three year action research project established.

Now entering its third year, the project has achieved several key milestones. Comprehensive community and literature based research has been gathered and a summary publication *Window on Waikato Poverty* issued. The research identifies the scale of regional poverty and the impact it has on our communities. The rising cost of food, housing and general living costs, as well as unemployment, particularly for youth, have placed severe hardship on people and families/whānau.

Poverty Action Waikato has raised public awareness of poverty through conference presentations, other speaking engagements and significant media activity. A regional community network is also now firmly established, providing opportunities for people to feed in to policy developments at a national and local level. A copy of *Window on Waikato Poverty* is available on our website at www.trustwaikato.co.nz.

Response

The research by Poverty Action Waikato revealed a strong concern in our communities about the lack of employment opportunities for young people. As we started talking with others, we soon recognised that there is a significant amount of work going on to address these issues. There is also growing interest in what more we might do together in this region.



Our Workforce: Our Youth presenters (L to R): John Kotoisuva, Anna Cox, Bev Gatenby, Jenna Clarke, Rose Black, Christine Hanley, Bret Halverson, Clint Baddeley and Dale Williams.

In March 2012, Trust Waikato hosted a forum called Our Workforce: Our Youth. The aim was to bring together people interested in sector strategies for addressing skills shortages and youth unemployment. Over 140 participants were able to listen to and discuss several inspiring presentations.

A highlight was workforce development consultant Bret Halverson, who shared valuable insights on effective sector strategies. C-Me Mentoring Foundation CEO John Kotoisuva then spoke about its Trades at School programme now operating in 14 schools across Auckland. Counties Manukau DHB's Jenna Clarke and Christine Hanley followed with a presentation on the Grow Our Own Workforce programme aimed at increasing Māori and Pacific participation in the professional health industry. In the afternoon participants had the opportunity to talk together and share about the work already being done in the region and what more we'd like to do.

Since the forum, a number of people have approached us about developing programmes which provide a full pipeline approach. These programmes will link to opportunities offered in secondary schools, with ties to tertiary education and training, and then link to jobs. This kind of work is significant to those involved in education, youth and career development, labour markets and employment, and local government. It is also of interest to a number of funders in the philanthropic sector.

Discussions are continuing with those parties interested in collaborating across our interests and responsibilities to improve the outcomes for both employers and young people. To find out more visit our website www.trustwaikato.co.nz.

“
Through partnerships like this, the Trust is better able to understand the diverse needs of our communities”

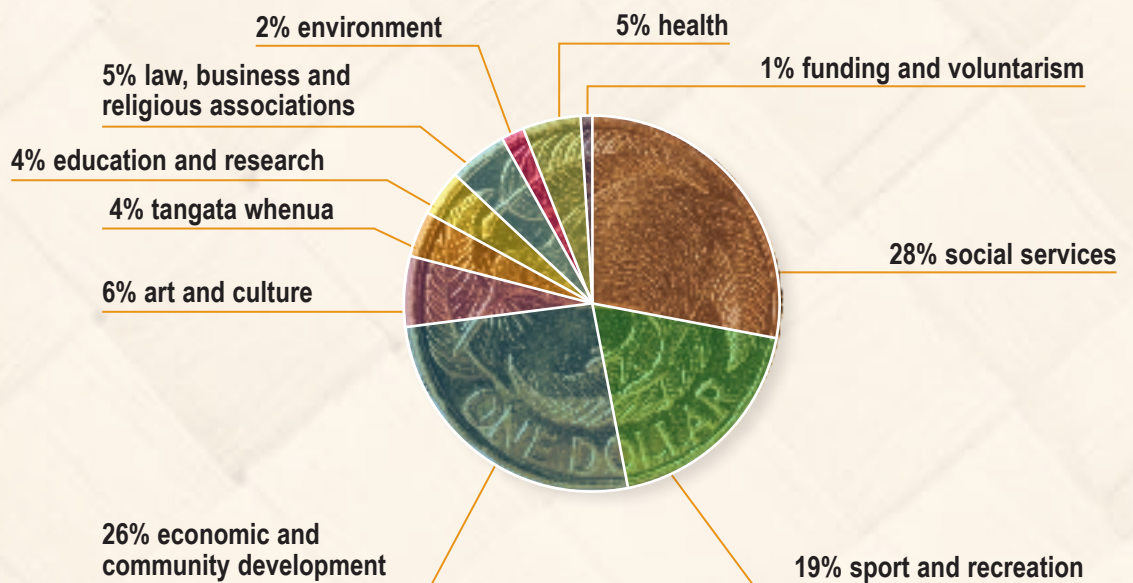
DONATING EFFECTIVELY

OVER the past three years the Trust has been operating on a reduced donations budget. This decision was due to the significant reduction in the Trust's capital fund, as a result of the global financial crisis in 2008. At that time the Trust also reviewed its donation focus and chose to prioritise donations which support children and families and those communities with the highest needs. This remains a focus of the Trust.

For 2011 the donations budget was set at \$7.19million. There were three donation rounds closing in February, June and September. Throughout the year the Trust granted a total of \$7.08million in donations to over 750 community groups and projects across the region. Donations were approved by the Trust Waikato board comprising 14 dedicated trustees from around the region with extensive community sector and business experience.

The Trust introduced multi-year donations in 2010 and approved 64 applications. Multi-year donations are granted for 2 or 3 years to those groups whose work aligns closely to the Trust's areas of focus. Of the 17 new multi-year donations approved in 2011, the largest sector represented was social service organisations. For more information about multi-year donations, refer to our Donation Policy available at www.trustwaikato.co.nz.

EVERY \$1 TRUST WAIKATO DONATED IN 2011 WAS SPLIT BETWEEN THESE SECTORS



Trust Waikato categorises its donations using the New Zealand Classification of Non-profit Organisations (NZSCNPO). You can find out more about this classification system by visiting the Statistics New Zealand website www.stats.govt.nz.

In 2011 donations reached the Trust's donation areas of focus. The largest donations went to supporting families and young people, followed by building resilient communities. A significant donation of \$500,000 was paid to the South Waikato District Council for the South Waikato Sport and Events Centre. Other significant capital works donations include Hamilton Christian Nightshelter Trust \$150,000 and Te Whakaruruhau Refuge \$100,000 (plus \$45,000 operating donation). Substantial donations were made to three umbrella trusts: Sport Waikato \$680,000, Community Waikato \$500,000 and Arts Waikato \$300,000.

Trust Waikato has donated over **\$125million** to the community in its 24 year history.

INVESTING WISELY

Trust Waikato was established by government statute in 1988 to hold the shares of Trust Bank Waikato (formerly the Waikato Savings Bank). Its financial resources exist because for several decades local people banked with the local community bank.

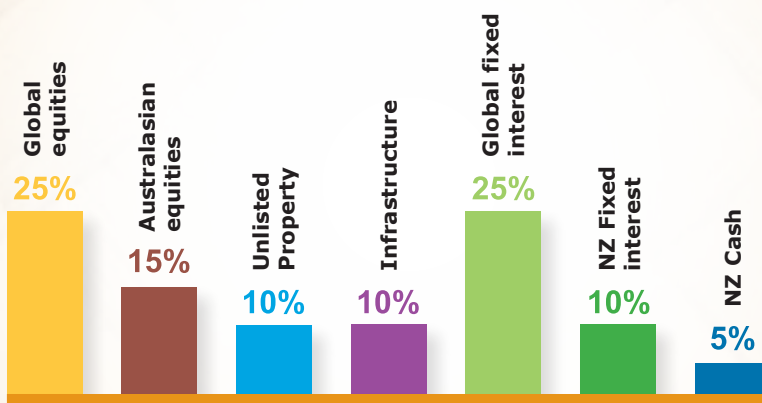
In 1996, the Trust sold its banking shares and invested in a range of financial assets. The initial value of the capital fund in 1996 was \$169.8million. At 31 March 2012, that capital fund had grown in value to over \$261.5million. Over the 24 years of the Trust, more than \$125million has also been donated to communities around the Trust region.

Trustees see their role as guardians, or kaitiaki, of the capital fund for both current and future generations in this region. Ideally the Trust's capital fund will be worth just as much for our grandchildren and their grandchildren and their grandchildren, as it is for us today. That means investing wisely to grow the value of the fund to keep up with inflation and population growth, as much as possible, while still donating consistently to assist local communities today. Sometimes that's a delicate balancing act.

During the year the Trust formally reviewed the governance of its investments and finances as part of our commitment to ensure sound governance of all aspects of the Trust's work.

For the year ended 31 March 2012, the Trust's investments returned 6.07%. During the year, the Trust completed implementing the following strategic asset allocation:

STRATEGIC ASSET ALLOCATION



“

Ideally the Trust's capital fund will be worth just as much for our grandchildren's grandchildren, as it is for us today”

The Trust continues to be a signatory to the Principles for Responsible Investment (PRI), an initiative of the United Nations and the investment community. The PRI provide an aspirational set of guidelines for ensuring that environmental, social and governance issues are taken account of by businesses and investors. The Trust takes seriously its role as an asset owner and wants to ensure its investment returns are sustainable and beneficial for communities and our environment.

In May 2011 the Trust jointly hosted, together with the Responsible Investment Association of Australasia (RIAA), a Shareholder Investment Forum. A number of overseas shareholder engagement organisations came to New Zealand to talk about responsible investment practice. The focus was on the ways investors can engage with the companies in which they invest to encourage sustainable practices.

The Trust fund is increasingly invested in funds managed with 'responsible investment' issues in mind, whether that be by excluding certain kinds of investments or by choosing to invest in assets adding to the sustainability of our world. In the coming year, the Trust will continue to implement its commitment to responsible investing.

THE WAIKATO COMMUNITY TRUST INCORPORATED

SUMMARISED FINANCIAL STATEMENTS FOR THE YEAR ENDED 31 MARCH 2012

DIRECTORY FOR THE YEAR ENDED 31 MARCH 2012

PRINCIPAL ACTIVITIES: Investment and Donations

TRUSTEES: Baddeley, Clint (Chair)
Barriball, Peggy
Flowers, Lynnette (Appointed 1 June 2011)
Gillespie, John
Hosking, Bruce (Investment Committee Chair)
McConnell, Angus (Retired 31 May 2011)
Muru, Judith
Nuri, Niwa (Appointed 1 June 2011)
Paenga, John
Roa, Pamela
Sporle, Raewyn
Tan, Fee-Ching
Van der Heyden, Ali (Deputy Chair)
Viggers, Maxine
Yates, Dianne

CHIEF EXECUTIVE: Gatenby, Bev

SECRETARY: Balme, Geoff

ACCOUNTANTS: PricewaterhouseCoopers, Hamilton

AUDITORS: KPMG, Hamilton

BANKERS: Westpac Limited, Hamilton

SUMMARISED STATEMENT OF COMPREHENSIVE INCOME FOR THE YEAR ENDED 31 MARCH 2012

	Notes	2012 NZ\$'000	2011 NZ\$'000
Revenue	2	10,682	10,182
Realised and Unrealised Gains / (Losses)	3	5,746	10,842
Total Operating Expenses		(9,620)	(10,029)
SURPLUS FROM OPERATIONS		6,808	10,995
Total Comprehensive Income for the year applied to Trust Funds			

SUMMARISED STATEMENT OF CHANGES IN TRUST FUNDS FOR THE YEAR ENDED 31 MARCH 2012

	2012 NZ\$'000	2011 NZ\$'000
TRUST FUNDS AS AT 1 APRIL	254,737	243,742
Surplus for the year	6,808	10,995
TRUST FUNDS AS AT 31 MARCH	261,545	254,737

SUMMARISED CASH FLOW STATEMENT FOR THE YEAR ENDED 31 MARCH 2012

	Notes	2012 NZ\$'000	2011 NZ\$'000
Net Cash Flow from Operating Activities	4	584	478
Net Cash Flow from Investing Activities		(104)	(183)
NET INCREASE / (DECREASE) IN CASH AND CASH EQUIVALENTS		480	295
Cash and Cash Equivalents at the Beginning of the Financial Year		397	102
CASH AND CASH EQUIVALENTS AT THE END OF THE FINANCIAL YEAR		877	397

SUMMARISED BALANCE SHEET FOR THE YEAR ENDED 31 MARCH 2012

	Notes	2012 NZ\$'000	2011 NZ\$'000
EQUITY			
Trust Funds		261,545	254,737
TOTAL EQUITY		261,545	254,737
CURRENT LIABILITIES			
Trade and Other Payables		355	265
Donations Payable		1,255	1,480
Employee Entitlements		45	35
Derivative Financial Instruments at Fair Value Through Profit or Loss		-	1,550
		1,655	3,330
TOTAL EQUITY AND LIABILITIES		263,200	258,067
CURRENT ASSETS			
Cash and Cash Equivalents		877	397
Trade and Other Receivables		37	26
Derivative Financial Instruments at Fair Value Through Profit or Loss		539	-
		1,453	423
NON CURRENT ASSETS			
Financial Assets at Fair Value through Profit or Loss	5	257,485	253,518
Property, Plant and Equipment		2,735	2,746
Sport Waikato Loan	6	1,332	1,222
Database Loan	7	195	158
		261,747	257,644
TOTAL ASSETS		263,200	258,067

For and on behalf of the Trustees, who authorised the issue of these summary financial statements on the date shown below:



Clint Baddeley
TRUSTEE

6 July 2012



Bruce Hosking
TRUSTEE

6 July 2012

These summary financial statements must be read in conjunction with the notes on pages 18 to 21

THE WAIKATO COMMUNITY TRUST INCORPORATED NOTES TO AND FORMING PART OF THE SUMMARISED FINANCIAL STATEMENTS FOR THE YEAR ENDED 31 MARCH 2012

1. STATEMENT OF ACCOUNTING POLICIES

Background

These are the summarised financial statements of The Waikato Community Trust Incorporated. The Trust was incorporated on 5 August 1988 with Trust capital of \$21,316,622.

These summarised financial statements are prepared in compliance with FRS - 43 'Summary Financial Statements' and have been extracted from the full audited financial statements for the year ended 31 March 2012 which were authorised for issue on 6 July 2012. Summarised financial statements cannot be expected to provide as complete an understanding as provided by the full financial statements, which can be obtained from the office of the Trust or from the Trust's website www.trustwaikato.co.nz.

The full financial statements have been subject to audit by KPMG and an unmodified audit report was issued on 6 July 2012. The audit concluded that the full financial statements "give a true and fair view of the financial position of the Trust as at 31 March 2012 and its financial performance and cashflows for the year then ended". These summarised financial statements were authorised by the Trustees for issue on 6 July 2012 and have been examined by KPMG for consistency with the full financial statements.

Statement of Compliance

The Trust's full financial statements have been prepared in accordance with Generally Accepted Accounting Practice in New Zealand (NZ GAAP) and The Incorporated Societies Act 1908. They comply with the New Zealand Equivalents to International Financial Reporting Standards (NZ IFRS) and other applicable Financial Reporting Standards as appropriate for Public Benefit Entities.

Basis of Preparation

The financial statements have been prepared on the basis of historical cost, except for the revaluation of certain assets which are stated at their fair value.

2. REVENUE

	2012 NZ\$'000	2011 NZ\$'000
Comprises:		
Dividends	7,657	6,706
Interest	3,001	3,447
Rent	22	22
Other Income	2	7
	10,682	10,182

3. REALISED AND UNREALISED GAINS / (LOSSES)

	2012 NZ\$'000	2011 NZ\$'000
Gains / (Losses) on Financial Assets at Fair Value Through Profit or Loss	2,877	8,593
Gains / (Losses) on Derivative Financial Instruments at Fair Value Through Profit or Loss	2,869	2,249
	5,746	10,842

4. CASH FLOW RECONCILIATION

	2012 NZ\$'000	2011 NZ\$'000
SURPLUS FOR THE YEAR	6,808	10,995
Adjust for non-cash items	(31)	(19)
Impact of changes in net assets and liabilities:	(6,193)	(10,498)
Net cash inflow from operating activities	584	478

5. FINANCIAL ASSETS AT FAIR VALUE THROUGH PROFIT OR LOSS

The Trust uses the services of an investment advisor to pursue an investment policy considered appropriate for the Trust. The Trust selects fund managers according to their style and specialist skills including the ability to protect capital in negative or down markets. In the year to 31 March 2012 the Trust confirmed the following strategic asset allocations:

	2012 Strategic Allocation %	2012 NZ\$'000	2011 Strategic Allocation %	2011 NZ\$'000
Growth Assets				
Global Equities	25%	67,515	25%	68,504
Australasian Equities	15%	40,551	15%	39,738
Unlisted Property	10%	26,242	10%	25,550
Infrastructure	10%	20,417	10%	1,851
Income Assets				
Global Fixed Interest	25%	64,287	25%	74,806
New Zealand Fixed Interest	10%	25,882	10%	26,368
New Zealand Cash	5%	12,591	5%	16,701
	100%	257,485	100%	253,518

6. SPORT WAIKATO LOAN

The loan to Sport Waikato is secured by a first ranking General Security Agreement (GSA) in favour of the Trust over all of Sport Waikato's present and after-acquired property with a first priority amount of no less than \$2,000,000 and by a first mortgage over Sport Waikato's leasehold estate and interest in their site at Wintec. The loan is interest free and repayable in one sum by 19 August 2013. The loan balance is made up as follows:

	2012 NZ\$'000	2011 NZ\$'000
Loan Principal	1,500	1,500
Fair Value Adjustment on Initial Recognition of Interest Free Loan	(525)	(525)
Cumulative Notional Interest	357	247
	1,332	1,222

The above loan carrying value is calculated using the market interest rate at the time of the loan drawdown. The fair value of the Sport Waikato loan at balance date is \$1,387,319 (2011: \$1,290,866). The cumulative notional interest is calculated at 9% which was the rate used when the fair value of the loan was calculated at inception. The fair value calculation is based on the 1.5 year (2011: 2.5 year) bank loan rate of 5.8% (2011: 6.5%).

7. DATABASE LOAN

The Trust and ten of the other eleven Community Trusts established under the 1988 Trustee Bank Restructuring Act have combined resources to own and operate an integrated donation management and financial management information system. The system has been implemented and once final development is completed will be owned and operated by a limited partnership named Te Kete Putea Limited Partnership (TKPLP), which is likely to be established in the first half of the new financial year. The total cost of the project is \$2,380,000. The Trust's contribution to these costs is 8.2%.

The capital of the limited partnership will consist of 10,000 units and each Trust will hold units broadly in proportion to its audited capital at 31 March 2008. The Trust will hold 820 units. The value of each unit has been determined at \$238.22. Until such time as TKPLP has been established, ASB Community Trust (ASBCT) is entering into project contracts with vendors on behalf of the Trusts and meeting the funding requirements for the project in terms of a letter of indemnity from each of the participating Trusts. The contracts with the vendors provide for the contracts to be novated to TKPLP once it becomes established.

The Trust has met its funding proportion for the project by way of a loan to ASBCT, which has agreed to undertake the work on the project and incur the project commitments. The Trust has granted an indemnity in favour of ASBCT in respect of such commitments. This loan, shown in the Trust's balance sheet, is unsecured and interest free. On the formation of TKPLP, the loan from the Trust will be extinguished by being retained and applied by ASBCT towards the Trust's capital contribution to TKPLP.

8. DONATIONS

On 24 April 2012 the Waikato Times published a list totalling \$7,088,150 which showed the donations approved by the Trust during the year ended 31 March 2012.

	\$
Total donations published in the Waikato Times	7,088,150
Less: Future conditional commitments included in above:	
Cambridge - Rotorua Live Steamers Inc	5,000
Coromandel Heritage Trust	55,000
Matahuru Papakainga Committee	50,000
Mesh Sculpture Hamilton	15,000
Order of St John - Te Kauwhata	64,000
Order of St John Tainui (Mokau)	30,000
Order of St John - Putaruru	40,000
Philips Search and Rescue Trust	75,000
St Mark's Church	100,000
Taumararui Netball Centre	10,000
Tauwhare School Board of Trustees	10,000
Waitetuna School	5,000
	459,000
Add: Past conditional commitments paid during year:	
Motiti Marae	12,000
Stanley Avenue School	10,000
Te Ohaaki Marae - Huntly	30,000
Te Papatapu Marae	60,000
Te Whanau Putahi	50,000
	162,000
Less: Payment of donations payable at beginning of year	
Community Waikato	500,000
Music and Arts Waikato Trust	300,000
Sport Waikato - SportsForce	680,000
	1,480,000
Add: Donations approved during the year and payable at end of year	
Community Waikato	500,000
Music and Arts Waikato Trust	75,000
Sport Waikato - SportsForce	680,000
	1,255,000
Less: Donations refunded during year:	
Fuel Festival Trust	5,000
Hamilton Children and Families Trust	750
Maniapoto Netball Association Inc	228
Matamata Primary School	1,000
National Foundation for the Deaf Inc	3,000
South Waikato Achievement Trust	5,000
Tairua Indoor Pool Feasibility Study Committee	2,000
Te Kopua Marae Committee	1,000
Toy Library - Te Aroha	750
Upper Central Zone of NZ Rugby League Inc	5,040
	23,768
Total donations for the year shown in the Statement of Comprehensive Income	6,542,382

A full list of donations is available on request from the Trust office, or at www.trustwaikato.co.nz

9. MEETING ATTENDANCE

The Trust held 20 formal meetings during the year. The following table records each Trustee's attendance at these formal meetings:

Trustee	Meeting Attendance	Honorarium	Meeting Fee	Total
	\$	\$	\$	
Baddeley, Clint (Chair)	19	11,400	27,295	38,695
Barriball, Peggy	19	3,070	9,380	12,450
Flowers, Lynnette (Appointed 1 June 2011)	15	3,070	10,968	14,038
Gillespie, John	19	3,070	8,890	11,960
Hosking, Bruce (Investment Committee Chair)	20	4,070	22,815	26,885
McConnell, Angus (Retired 31 May 2011)	2	768	945	1,713
Muru, Judith	18	3,070	7,455	10,525
Nuri, Niwa (Appointed 1 June 2011)	14	3,070	10,513	13,583
Paenga, John	18	3,070	10,500	13,570
Roa, Pamela	20	3,070	13,370	16,440
Sporle, Raewyn	19	3,070	9,520	12,590
Tan, Fee-Ching	20	3,070	8,785	11,855
Van der Heyden, Ali (Deputy Chair)	19	5,846	10,875	16,721
Viggers, Maxine	20	3,070	9,730	12,800
Yates, Dianne	20	3,070	9,695	12,765
Total Remuneration				226,590

In addition during the year Trustees were required as part of their role to attend a number of both formal and informal meeting to represent the Trust. During the year the Trustees and Trust staff were invited to 209 separate formal and informal meetings and functions. The Trust was able to achieve representation at approximately 169 of these meetings and functions.

10. CONTINGENT LIABILITIES AND COMMITMENTS

10.1 Contingent Liabilities

The following contingent liabilities exist for donations that have been approved in the current or previous years subject to the fulfilment of certain conditions in future years.

	2012 NZ\$'000	2011 NZ\$'000
Total Contingent Liabilities	3,582	4,512
Subject to fulfilment of the conditions, the contingent liabilities are payable as follows:		
Not later than 1 year	851	693
Later than 1 year and not later than 5 years	2,731	3,819
	3,582	4,512

10.2 Commitments

The Trust has made a commitment to invest \$8,000,000 in an infrastructure investment fund. To date \$1,822,000 has been invested in funds of this type. The balance of \$6,178,000 will be invested if the fund manager identifies suitable investment vehicles (2011: \$6,178,000). It is expected that \$450,000 will be called upon during the 2014 financial year. The investment will be funded by realising other investments currently held by the Trust.

11. RELATED PARTY TRANSACTIONS

Key Management Personnel

The compensation of the Trustees and executives, being the key management personnel of the Trust, is set out below:

	2012 NZ\$'000	2011 NZ\$'000
Short Term Trustee and Employee Benefits	397	369
	397	369

Transactions with Executives

Executives were related to organisations that received donations totalling \$38,500 (2011: \$35,000) during the year. Interests were declared when these donations were considered and key management took no part in deliberations relating to organisations in which they had an interest. There are no outstanding balances at balance date.

Transactions with Trustees

Trustees were related to organisations that received donations totalling \$234,500 (2011: \$249,000) during the year. Interests were declared when these donations were considered and Trustees took no part in deliberations relating to organisations in which they had an interest. There are no outstanding balances at balance date.



INDEPENDENT AUDITOR'S REPORT ON THE SUMMARY FINANCIAL STATEMENTS TO THE TRUSTEES OF THE WAIKATO COMMUNITY TRUST INCORPORATED

The accompanying summary financial statements on pages 17 to 21, which comprise the summary balance sheet as at 31 March 2012 and the summary statements of comprehensive income, changes in trust funds and cash flows for the year then ended and notes, are derived from the audited financial statements of The Waikato Community Trust Incorporated ("the Trust") for the year ended 31 March 2012. We expressed an unmodified audit opinion on those financial statements in our report dated 6 July 2012.

The summary financial statements do not contain all the disclosures required for full financial statements under generally accepted accounting practice in New Zealand. Reading the summary financial statements, therefore, is not a substitute for reading the audited financial statements of The Waikato Community Trust.

Trustees' responsibility for the financial statements

The trustees are responsible for the preparation of a summary of the audited financial statements, in accordance with FRS-43 *Summary Financial Statements*.

Auditor's responsibility

Our responsibility is to express an opinion on the summary financial statements based on our procedures, which were conducted in accordance with International Standards on Auditing (New Zealand) (ISA (NZ)) 810 *Engagements to Report on Summary Financial Statements*.

Other than in our capacity as auditor we have no relationship with, or interests in, the trust.

Opinion

In our opinion, the summary financial statements, derived from the audited financial statements of The Waikato Community Trust for the year ended 31 March 2012, are a fair summary of those financial statements, in accordance with FRS-43 *Summary Financial Statements*.

6 July 2012
Hamilton

DONATIONS

2011/2012



DONATIONS 2011/2012

CONGRATULATIONS

FROM TRUST WAIKATO TO OVER 700 ORGANISATIONS THROUGHOUT THE GREATER WAIKATO WHO WERE GRANTED \$7,088,150 IN DONATIONS DURING THE YEAR ENDED 31 MARCH 2012.

**Donations to be paid out when the project proceeds.*

CAMBRIDGE GROUPS

60s Up Movement - Cambridge	\$500
Armistice in Cambridge	\$4,000
Cambridge - Rotorua Live Steamers *	\$5,000
Cambridge Athletic and Harrier Club	\$1,500
Cambridge Autumn Festival Trust	\$750
Cambridge Badminton Club	\$350
Cambridge Baseball Club	\$350
Cambridge Blind and Vision Impaired Support Group	\$350
Cambridge Committee of Social Services	\$1,000
Cambridge Community Agencies Network Trust	\$15,000
Cambridge Community Kitchen	\$1,000
Cambridge Dyslexic Trust	\$350
Cambridge Elim Community Trust	\$5,000
Cambridge Golf Club	\$350
Cambridge Gym Sports Club	\$350
Cambridge Junior Rugby and Community Sports Club	\$2,000
Cambridge Kids Playgroup	\$350
Cambridge Life Skills Institute Trust	\$5,000
Cambridge Pony Club	\$350
Cambridge Primary School	\$500
Cambridge Rowing Club	\$3,000
Cambridge Safer Community Charitable Trust	\$1,000
Cambridge Tree Trust	\$500
Citizens Advice Bureau - Cambridge	\$3,000
Finlay Park Adventure Camp	\$15,000
Maungatautari Ecological Island Trust	\$50,000
Operation Cover Up Cambridge Branch	\$500
Parents Centre - Cambridge	\$1,000
Raleigh Street Christian Centre	\$5,000
Riding For The Disabled - Cambridge Group	\$1,000
Royal New Zealand Plunket Society - Cambridge Branch	\$350
Sustainable Cambridge	\$1,000
Synergy Cambridge Trust	\$8,000
Toy Library - Cambridge	\$1,000
Whitehall Settlers Hall Association	\$350
CAMBRIDGE TOTAL	\$134,750

COROMANDEL GROUPS

Colville Community Health Trust	\$7,500
Colville Music Society	\$500
Colville Social Service Collective Charitable Trust	\$8,000
Coromandel Artists Express Charitable Trust	\$500
Coromandel Budget Advisory Service	\$1,000
Coromandel Community Organic Garden	\$1,000
Coromandel Community Recreational Society	\$5,000
Coromandel Education Advancement Charitable Trust	\$500
Coromandel Embroidery Guild	\$350
Coromandel Foodbank	\$3,000
Coromandel Independent Living Trust	\$40,000
Coromandel Music Society	\$350
Coromandel Swimming Club	\$1,250
Coromandel Youth Support Association	\$3,500
Koputauaki Combined Community Centre	\$1,500
Manaia Marae Trustees	\$1,000
Seniornet Coromandel	\$350
Spirit of Coromandel Trust	\$5,000
COROMANDEL TOTAL	\$80,300



HAMILTON GROUPS

A Rocha Aotearoa New Zealand	\$3,000	Hamilton Abuse Intervention Project (HAIP)	\$25,000
Ace Swimming Club	\$500	Hamilton Arthritis Support Group	\$500
Air Training Corp - No 7 Squadron City of Hamilton	\$1,000	Hamilton BMX Club	\$500
Ai-xin Society Hamilton Branch	\$2,000	Hamilton Budgeting Advisory Trust	\$5,000
Alcohol and Drug Community Support Trust	\$9,000	Hamilton Children and Families Trust	\$2,000
Anglican Action	\$45,000	Hamilton Chinese Golden Age Society	\$1,000
Arthritis New Zealand - Waikato	\$15,000	Hamilton Chinese Learning Centre Charitable Trust	\$2,000
Arts For Health Community Trust	\$15,000	Hamilton Christian Nightshelter Trust	\$165,000
Bangladeshi Community of Waikato	\$500	Hamilton City Bowling Club	\$500
Bhartiya Musical Cultural Social and Sports Council	\$350	Hamilton City Christmas Parade Trust	\$2,500
Birtright Waikato Te Whanautanga Tika	\$25,000	Hamilton City Council	\$10,000
Catholic Diocese of Hamilton	\$750	Hamilton City Cycling Club	\$2,000
Catholic Family Support Services	\$35,000	Hamilton City Netball Centre	\$30,000
Celebrating Age Centre User Group	\$750	Hamilton Civic Choir	\$1,000
Centre 401 Trust	\$2,000	Hamilton Combined Christian Foodbank Trust	\$10,000
Chartwell Co-Operating Parish	\$1,000	Hamilton Community Men's Shed Trust	\$2,000
Citizens Advice Bureau - Hamilton Area	\$28,000	Hamilton Cricket Association	\$20,000
City Hope Charities Trust	\$15,000	Hamilton Disability Pride Film Festival	\$1,000
College Old Boys Rugby League Club Charitable Trust	\$4,000	Hamilton East Croquet Club	\$350
Community Development Trust	\$30,000	Hamilton East Playcentre	\$1,500
Creative Hamilton	\$25,000	Hamilton Gardens Development Trust	\$5,000
Crosslight Trust	\$20,000	Hamilton Gardens Summer Festival Foundation	\$20,000
Desert Spring Ministries Trust	\$8,000	Hamilton Hornets Rugby League Sports Club	\$6,000
Dress For Success Hamilton Trust	\$4,000	Hamilton Indoor Bowling Sub-Centre	\$500
Duavata Club	\$500	Hamilton Inline Hockey Club	\$1,000
Eastlink Tennis Trust	\$1,000	Hamilton Kart Club	\$1,000
Eastside Singers	\$350	Hamilton Kerala Samajam	\$750
Ekal Vidyalaya Foundation of NZ	\$350	Hamilton Land Search and Rescue Trust	\$5,000
Enderley Academy of Sport Trust	\$5,000	Hamilton Methodist Social Services	\$15,000
Enderley Computer Clubhouse Trust	\$8,000	Hamilton Multicultural Services Trust	\$44,000
Enderley Park Community Centre	\$30,000	Hamilton Multiple Birth Club	\$500
Enderley Tool Library	\$600	Hamilton North East Community Development Trust	\$1,000
Endometriosis Waikato	\$1,500	Hamilton Operatic Society	\$5,000
English Language Partners Waikato	\$18,000	Hamilton Permaculture Trust	\$750
Faamasani Preschool	\$500	Hamilton Ramayan Sanstha	\$1,000
Fairfield Amateur Swimming Club	\$750	Hamilton Samoan AOG Youth Group	\$3,000
Fairfield College	\$1,500	Hamilton South Community Centre Te Whare Kokonga	\$10,000
Family Education Network	\$2,000	Hamilton Squash & Tennis Club	\$2,500
Family Wise Trust	\$1,500	Hamilton United Women's Bowling Club	\$350
Frankton Railway Bowling Club	\$2,000	Hamilton Wado Kai Karate Club	\$1,000
Fuel Festival Trust	\$15,000	Hamilton West Kindergarten	\$350
Gastric Reflux Support Network NZ Charitable Trust	\$500	He Puawai	\$2,500
Gifted Education Centre	\$1,000	Hearing Association - Hamilton and District	\$4,000
Glenview Community Centre	\$10,000	Hifofua E Tonga	\$350

DONATIONS 2011/2012

Hamilton groups continued.

Hillcrest Bowling Club	\$350
Hillcrest United Junior Soccer Club	\$1,500
Indian Cultural Society (Waikato)	\$1,500
Jap Bunnies Volleyball Club	\$350
K'aute Pasifika Services	\$4,000
Kiribati Kirikiriroa Culture Society	\$500
Kiribati Waikato Association	\$500
Kirikiriroa Maori Wardens Sub Association	\$8,000
Kotahitanga O Kahungunu	\$350
La Leche League - Hillcrest	\$350
La Leche League - Westside	\$350
Link House Agency	\$38,000
Lochiel Golf Club	\$500
Lugton Park Combined Sports Association	\$1,000
Male Survivors of Sexual Abuse Trust, Waikato	\$15,000
Mangaiti Gully Restoration Trust	\$350
Marawaatea Maori Women's Welfare League	\$1,000
Matangi Hillcrest Sports Club	\$1,500
Mauri Taiaho Charitable Trust	\$1,000
McKenzie Centre Trust	\$12,000
Melville Kindergarten	\$350
Mesh - Sculpture Hamilton *	\$15,000
Mesh - Sculpture Hamilton	\$1,000
Mighty River Harmony	\$1,000
Mumento	\$350
Nawton Community Children and Families Charitable Trust	\$4,000
Nepal New Zealand Friendship (Waikato) Society	\$1,000
New Life Church - Hamilton	\$1,000
New Zealand Ethnic Social Services Trust	\$5,000
New Zealand Indian Association - Country Section	\$750
New Zealand Russian (Waikato) Friendship	\$500
North City Yoga Club	\$350
North Hamilton Community Patrol	\$1,000
Oaks Christian Centre	\$500
Ohaupo Playcentre	\$350
Opus Orchestra	\$3,000
Pacific Rose Bowl Festival Trust	\$1,500
Parafed Waikato	\$15,000
Parent to Parent (Waikato)	\$7,000
Parentline Charitable Trust	\$20,000
Parents Place Charitable Trust	\$25,000
Pasifika By Nature	\$6,000
Patricia Avenue School	\$1,000
Phoenix House Charitable Trust	\$4,000
Pregnancy Counselling Services	\$1,000
Prison Care Ministries	\$4,000

Prisoners Aid & Rehabilitation Society of Waikato	\$2,000
Promoting Mental Wellness	\$2,000
Pukete Neighbourhood House	\$15,000
Rainbow Chinese Community Centre Charitable Trust	\$4,000
Rangatahi to Rangitira Charitable Trust	\$3,000
Rape & Sexual Abuse Healing Centre	\$17,000
Rauawaawa Kaumatua Charitable Trust	\$18,000
Refugee Orientation Centre Trust	\$10,000
Refugee Services Aotearoa New Zealand	\$14,000
Resthills Sports Centre	\$500
Restyle - Trash to Fashion (Waikato) Trust	\$1,000
Riding for the Disabled - Hamilton	\$5,000
Riding For The Disabled - Waikato Group	\$8,000
River City Training Academy	\$20,000
Riverlea Theatre & Arts Centre	\$25,000
RNZSPCA - Waikato	\$1,000
Royal New Zealand Plunket Society - Hamilton	\$5,000
Salvation Army Hamilton Nest Community Ministries	\$45,000
SANDS Waikato	\$1,000
School Attendance Service Hamilton	\$5,000
Scout Group - Hillcrest	\$750
Separated Parenting Services	\$1,000
SHAMA Hamilton Ethnic Women's Centre Trust	\$15,000
Society of St Vincent de Paul - Hamilton	\$12,000
South East Kirikiriroa Community Association	\$10,000
SPELD Auckland	\$3,000
Spiralz Rhythmics of Hamilton	\$350
Sri Lanka Friendship Society Waikato	\$1,000
St Mark's Church	\$2,500
St Mark's Church *	\$100,000
St Paul's Swimming Club	\$500
Streetworks Charitable Trust	\$3,000
Stroke Foundation Hamilton	\$3,000
Supporting Families in Mental Illness Waikato	\$1,000
Taiohi Toa Trust	\$18,000
Taki Rua Productions Society	\$2,000
Tamil Society Waikato	\$1,000
Tauwhare Combined Sports Body	\$750
Tauwhare School Board of Trustees *	\$10,000
Te Iti o Haua Kapahaka Club	\$500
Te Iti o Haua Marae	\$1,000
Te Kohanga Reo O Nga Kuaka Hotaka Manaaki	\$3,000
Te Kohao O Te Ngira Kohanga Reo	\$750
Te Kowhai Kindergarten	\$500
Te Rapa Badminton Club	\$350
Te Rapa Squash Club	\$500

Te Rapakau Pacific Trust	\$5,000
Te Ropu Wahine Maori Toko I Te Ora Maori Womens Welfare League - Hamilton	\$3,000
Te Runanga o Kirikiriroa Charitable Trust	\$5,000
Te Whakaruruhau Refuge	\$145,000
Te Whanau Putahi	\$18,000
Te Whare O te Ata - Fairfield Chartwell Community Centre	\$15,000
Temple View Residents Association	\$1,000
Tepora Ministries	\$4,000
The CARE Community Trust	\$1,500
The Hub Youth Charitable Trust	\$20,000
Toku Mapihi Maurea Kohanga Reo	\$500
Toughlove Waikato Trust	\$2,000
Toy Library - Hamilton East	\$500
Toy Library - Hamilton Toy Box	\$1,000
Toy Library - Kidz Korner	\$350
Toy Library - Little Blessings	\$500
True Colours Charitable Trust	\$20,000
U Leisure	\$3,500
United Youth Orchestra	\$500
University of Waikato - Hamilton Children's Reading Centre	\$5,000
Waikato Association For Gifted Children	\$500
Waikato Colombian Association	\$500
Waikato Community Hospice Trust	\$20,000
Waikato Dragon Boat & Waka Ama Association	\$3,000
Waikato Embroiderers Guild	\$350
Waikato Fakahalafononga Tongan Group	\$500
Waikato Family Centre Trust	\$25,000
Waikato Filipino Association	\$5,000
Waikato Goju-Ryu Karate	\$350
Waikato Guild of Wood Workers	\$500
Waikato Health and Disability Expo Trust	\$2,000
Waikato Hispano Latino Cultural Group	\$1,000
Waikato Home Birth Association	\$500
Waikato Interfaith Council	\$750
Waikato Japanese Supplementary School	\$350
Waikato Masters Athletics	\$350
Waikato Medical Research Foundation	\$65,000
Waikato Modern Choir	\$500
Waikato Multicultural Council	\$1,000
Waikato Muslim Association	\$3,000
Waikato Orchestral Society	\$40,000
Waikato Patchworkers and Quilters Guild	\$1,000
Waikato Playcentre Association	\$1,500
Waikato Punjabi Badminton Club	\$350
Waikato Queer Youth	\$3,000

Waikato Refugee Resettlement Society	\$2,000
Waikato Rivertones	\$500
Waikato Rowing Club	\$3,000
Waikato Rugby Football League	\$2,500
Waikato Senior Indian Citizens Association	\$1,000
Waikato Society of Arts	\$5,000
Waikato Softball Association	\$5,000
Waikato Somali Friendship Society	\$10,000
Waikato University Hockey Club	\$500
Waikato Water Polo Club	\$750
Waikato Youth Empowerment Trust	\$25,000
Wanderers Sports Club	\$500
Western Community Association	\$25,000
Whitiora School	\$350
Woodlands Trust	\$1,000
Yoga Education in Prisons Trust	\$500
Young Workers Resource Centre	\$20,000
Youth Search and Rescue Hamilton Trust	\$5,000
YWCA Hamilton	\$15,000
Zipper Cardiac Support Club of NZ	\$1,000
Znane Russian Language and Culture Group	\$500
HAMILTON TOTAL	\$1,954,450



DONATIONS 2011/2012

HUNTLY GROUPS

Counties Manukau Sport Foundation	\$20,000
Friendship House Huntly Community Centre	\$3,000
Huntly Community Advice Centre Trust	\$1,000
Huntly Energy Efficiency Trust (HEET)	\$10,000
Huntly Mining & Cultural Museum Society	\$5,000
Influence Trust	\$10,000
Matahuru Papakainga Committee *	\$50,000
Onewhero Society of Performing Arts	\$5,000
Order of St John - Te Kauwhata *	\$64,000
Rahui Pokeka Waka Sports	\$2,000
Richfields Eventing	\$350
Taniwharau Rugby League Football Club	\$1,000
Taupiri Bowling Club	\$350
Taupiri Rugby Football Club	\$750
Te Kauwhata Playcentre	\$2,500
Trust Waikato Sunset Beach Lifeguard Service	\$15,000
Volunteer Fire Brigade - Huntly	\$1,000
Volunteer Rural Fire Force - Onewhero	\$1,000
Waahi Whaanui Trust	\$15,000
Waikato Enterprise Agency	\$2,000
HUNTLY TOTAL	\$208,950

MATAMATA GROUPS

60s Up Movement of NZ - Matamata Branch	\$350
Citizens Advice Bureau - Matamata	\$1,500
Hearing Association - Matamata Branch	\$350
Hinuera Playcentre	\$350
Jump n Jive	\$350
Matamata Blue Light Kids Club	\$2,500
Matamata Christmas Choir	\$350
Matamata Citizens Band	\$1,000
Matamata Dramatic Society	\$500
Matamata Geriatric Day Care Centre	\$500
Matamata Musical Theatre Society	\$1,000
Matamata Sculpture Symposium	\$500
National Council of Women - Matamata	\$350
Starfish Social Services Trust	\$12,000
Te Hauora O Ngati Haua Trust	\$73,000
Te Ohaki Marae - Matamata	\$750
Totara Springs Christian Centre	\$10,000
Waharoa Amateur Athletic Club	\$500
Waharoa Kaitiaki Trust	\$1,000
MATAMATA TOTAL	\$106,850

MORRINSVILLE GROUPS

David Street School	\$1,000
Floral Art Society of New Zealand - Thames Valley	\$350
Hahi Tamariki o Paki o Matariki	\$2,500
Hearing Association - Morrinsville Branch	\$350
Kereone Rugby and Sports Club	\$3,000
Morrinsville and District Senior Citizens Association	\$750
Morrinsville Baptist Church	\$7,000
Morrinsville Care and Craft Charitable Trust	\$350
Morrinsville Community House	\$7,000
Morrinsville Croquet Club	\$500
Morrinsville Ezekiel Trust Budgeting Service	\$500
Morrinsville Golf Club	\$20,000
Morrinsville Historical Society	\$2,000
Morrinsville Rugby Football Union	\$1,000
Morrinsville Stroke Club	\$350
New Zealand Society of Genealogists - Morrinsville Branch	\$400
Nga Wairere o te Ora	\$1,500
Ngati Haua Mahi Trust	\$4,000
Ngati Haua Treaty Claims Trust	\$1,500
Northern Rugby Football Club	\$750
Parents Centre - Morrinsville	\$350
Piako Community Whanau Trust	\$12,000
Piako Concert Brass Band	\$750
Piako Gymnastics Club	\$500
Rukumoana Te Kohanga Reo	\$2,000
Rural Women New Zealand - Tatuani	\$350
Tauhei Memorial Hall	\$500
Toy Library - Morrinsville Town and Country	\$500
MORRINSVILLE TOTAL	\$71,750



NGARUAWAHIA GROUPS

Blue Light Ventures - North Waikato	\$5,000
Christian Youth Camps	\$5,000
Nga Miro Charitable Trust	\$15,000
Ngaruawahia Community Care and Crisis Support Trust	\$8,000
Ngaruawahia Community House	\$12,000
Ngaruawahia Pony Club	\$350
Ngaruawahia Tu Tangata Charitable Trust	\$11,000
Taupiri Marae	\$20,000
Taupiri Squash Club	\$2,000
Turangawaewae Trust Board	\$5,000
Twin Rivers Arts Council (Ngaruawahia)	\$10,000
Wakatoo Boxing Club	\$2,000
NGARUAWAHIA TOTAL	\$95,350

OTOROHANGA GROUPS

Counselling Services North King Country	\$18,000
Harvest Centre Charitable Trust	\$9,500
Kawhia Regional Museum and Art Gallery	\$2,000
Kawhia Rowing Regatta Club	\$3,000
Kawhia Tourism Trust	\$5,000
North King Country Family Support	\$10,000
Otorohanga District Development Board	\$1,000
Otorohanga Football Club	\$350
Otorohanga Support House - Whare Awhina	\$4,000
Parent Education Group - Otorohanga	\$500
Pop In Club	\$350
Riding for the Disabled - Central King Country	\$1,000
Taarewaanga Marae Committee	\$2,000
Te Hinengaro O Kawhia Charitable Trust	\$4,000
Te Runanganui o Ngati Hikairo	\$1,000
Toy Library - Otorohanga	\$1,000
OTOROHANGA TOTAL	\$62,700

PAEROA GROUPS

Children's Art House - Paeroa	\$3,000
Hauraki Maori Trust Board	\$70,000
Ngatea Playcentre	\$1,500
Ngatea Primary School	\$500
Paeroa and Districts Historical Society	\$500
Paeroa Basketball Association	\$1,000
Paeroa Community Support Trust	\$25,000
Paeroa Croquet Club	\$500
Paeroa L&P BMX Club	\$500
Paeroa Lawn Tennis and Squash Rackets Club	\$500
Paeroa Little Theatre	\$500
Paeroa Neighbours Food Bank	\$2,000
Paeroa Netball Centre	\$1,500
Positive Paeroa	\$2,000
Thames Valley Bowls	\$6,000
Thames Valley Croquet Association	\$500
Thames Valley Indoor Bowling Centre	\$750
Turua Primary School	\$350
PAEROA TOTAL	\$116,600

PUTARURU GROUPS

Family and Caregiver Support - Putaruru	\$6,000
Kuranui School Board of Trustees	\$350
Ngatira Marae Committee Society	\$1,000
Order of St. John - Putaruru *	\$40,000
Overdale Community Centre Charitable Trust	\$8,000
Putaruru Amateur Athletic and Harrier Club	\$1,500
Putaruru Baptist Church	\$20,000
Putaruru Community Budget Service	\$1,000
Putaruru Squash Club	\$1,000
Putaruru Youth Matters Trust	\$5,000
South Waikato Arts Trust	\$1,000
South Waikato Good Companions Club	\$500
Te Awa Oranga Charitable Trust	\$3,000
Timber Museum of New Zealand Trust	\$25,000
Tirau Over 50's Club	\$350
Tirau Senior Citizens	\$500
Toy Library - Putaruru	\$750
PUTARURU TOTAL	\$114,950

DONATIONS 2011/2012

RAGLAN GROUPS

Children's Bible Ministries - Raglan	\$20,000
Kaiwhenua Organics Charitable Trust	\$14,000
Raglan and District Museum Society	\$3,000
Raglan Area School	\$1,500
Raglan Community Arts Council	\$7,000
Raglan Community Cultural Centre Trust	\$1,000
Raglan Community House Society	\$10,000
Raglan Community Patrol Charitable Trust	\$500
Raglan Community Vehicle Trust	\$500
Raglan Events and Multisport Trust	\$350
Raglan Junior Soccer Club	\$350
Raglan Maori Wardens Charitable Trust	\$5,000
Raglan Sailing Club	\$500
Returned and Services Association - Raglan	\$1,000
Surfside Christian Life Centre	\$5,000
Te Mauri Tau	\$15,000
Te Uku Pony Club	\$350
Volunteer Coastguard - Raglan	\$3,000
Waitetuna School *	\$5,000
Whaingaroa Environment Centre	\$3,000
Xtreme Waste Society	\$2,000
RAGLAN TOTAL	\$98,050

REGIONAL GROUPS

Allergy NZ	\$1,500
Alzheimers Waikato Charitable Trust	\$10,000
Anglican Action - Poverty Action Waikato	\$90,000
Asthma and Respiratory Services (Waikato)	\$5,000
Athletics Waikato Bay of Plenty	\$12,000
Auckland District Kidney Society	\$8,000
Autism NZ - Waikato Branch	\$12,000
Balloons Over Waikato Charitable Trust	\$20,000
Barnardos New Zealand	\$12,000
Bowls Waikato	\$10,000
Canteen - Waikato	\$3,000
Catholic Women's League Hamilton Diocese	\$2,000
Citizens Advice Bureaux - Waikato/BOP Region	\$4,000
Cochlear Implant Foundation of New Zealand	\$5,000
Community Waikato	\$500,000
Deaf Aotearoa New Zealand - Waikato	\$5,000
Diabetes New Zealand Waikato	\$2,000
Dyslexia Association of Waikato	\$1,000
Epilepsy Association of New Zealand - Waikato Branch	\$7,500
Girl Guides Association of NZ	\$3,000
Habitat for Humanity (Central North Island)	\$5,000
Head Injury Society (Waikato)	\$5,000
Hearing Dogs for Deaf People New Zealand	\$350
Heart Children New Zealand	\$3,000
IHC New Zealand	\$2,000
INA (Maori, Indigenous and South Pacific) HIV/AIDS Foundation	\$8,000
Institute for Child Protection Studies (CPS)	\$20,000
La Leche League - Central North Island	\$500
Lifeline Waikato	\$17,000
Literacy Waikato	\$15,000
Mana Aki Trust Aotearoa (MATA)	\$1,000
Motor Neurone Disease Association	\$1,000
Muscular Dystrophy Northern	\$5,000
Music and Art Waikato Trust	\$300,000
National Foundation for the Deaf	\$500
National Heart Foundation of NZ - Waikato Branch	\$5,000
National Wetland Trust of New Zealand	\$5,000
Netball Waikato Region	\$40,000
New Zealand Council of Victim Support Groups - Waikato District	\$30,000
New Zealand Federation of Family Budgeting Services	\$6,000
New Zealand Federation of Voluntary Welfare Organisations	\$15,000
New Zealand Hack and Pony Council	\$2,500
New Zealand Wheelchair Tennis	\$1,000
No 3 District Federation of New Zealand Football	\$15,000



Open Home Foundation - Waikato/Hauraki	\$24,000
Para Kore Marae	\$10,000
Parent to Parent New Zealand	\$10,000
Parents Inc	\$5,000
Parkinsonism Society Waikato	\$8,000
Philanthropy New Zealand	\$24,000
Philips Search and Rescue Trust *	\$75,000
Presbyterian Support Services (Northern)	\$10,000
Relationship Services Whakawhangaungatanga	\$5,000
RMH Auckland Trust	\$8,000
Rostrevor House	\$25,000
Royal Forest & Bird Protection Society	\$2,000
Royal New Zealand Plunket Society - Waikato Area	\$12,000
Rural Women of New Zealand - Waikato Region	\$350
Scout Association of New Zealand	\$3,000
Show Me Shorts Film Festival Trust	\$500
Sir Edmund Hillary Outdoor Pursuits Centre of New Zealand	\$20,000
Special Olympics Waikato	\$8,000
Spirit of Adventure Trust	\$10,000
Sport Waikato - Sports Force	\$680,000
Squash Waikato	\$2,000
Stage Challenge Foundation	\$1,000
StarJam Charitable Trust	\$17,000
Stroke Foundation Midland Region	\$12,000
Surf Life Saving New Zealand (Eastern Region)	\$5,000
Swim Waikato	\$10,000
Tainui Regional Council - Maori Women's Welfare League	\$12,000
Tangata Whenua Community and Voluntary Sector Research Centre	\$8,000
Te Korowai Hauora O Hauraki	\$70,000
Te Potiki National Trust	\$4,000
Tennis Waikato - Bays Region	\$3,000
The Inspiring Communities Trust	\$3,500
The Kids Help Foundation Trust	\$5,000
Volunteering Waikato	\$85,000
Waikato Area Girls' Brigade	\$1,000
Waikato Area Pony Club	\$350
Waikato Badminton Association	\$15,000
Waikato Basketball Council	\$12,000
Waikato Community Broadcasting Charitable Trust	\$30,000
Waikato Community Patrols	\$500
Waikato Cycling Sports Academy	\$1,500
Waikato Environment Centre Trust	\$50,000
Waikato Golf Association	\$10,000
Waikato Hockey Association	\$32,000
Waikato Indoor Bowling Centre of New Zealand	\$1,000

Waikato Institute for Leisure & Sport Studies	\$35,000
Waikato Ploughing Match Association	\$1,000
Waikato Region BMX Association	\$1,000
Waikato Regional Volleyball Association	\$8,000
Waikato Touch Association	\$17,000
Waikato Valley Cricket Association	\$27,000
Women's Institutes	\$8,000
Zeal Education Trust	\$20,000
REGIONAL TOTAL	\$2,663,550

TAUMARUNUI GROUPS

Anglican Church - Taumarunui	\$2,000
Hikairo Marae and Papakainga Trust	\$3,000
Manunui School	\$2,000
Marin Swimming Club	\$4,000
Ngati Haua Iwi Trust - Y.Ora	\$5,000
Order of St John Tainui (Mokau) *	\$30,000
Owhango Residents and Ratepayers Society	\$1,000
Owhango School Board of Trustees	\$1,000
Rata Street Pre-School	\$1,000
Taumarunui Baptist Church Social Services Trust	\$750
Taumarunui Basketball and Sports Association	\$5,000
Taumarunui Christian Education Trust	\$9,000
Taumarunui Community Christian Foodbank Trust	\$3,000
Taumarunui Community Kokiri Trust	\$29,000
Taumarunui Counselling Services	\$7,000
Taumarunui District Truancy Service	\$6,000
Taumarunui Multisport Committee	\$1,000
Taumarunui Netball Centre *	\$10,000
Taumarunui Squash Racquets Club	\$5,000
Taumarunui Women's Refuge and Support Centre	\$1,500
Thrive Group	\$23,000
Toy Library - Ruapehu	\$1,000
Tuhua Hikurangi Regional Management Committee	\$3,500
TAUMARUNUI TOTAL	\$153,750



DONATIONS 2011/2012

TE AROHA GROUPS

Domain Day Committee	\$1,500
Future Te Aroha	\$8,000
Mountain View Church	\$4,000
SeniorNet Te Aroha	\$350
St Josephs School Board of Trustees - Te Aroha	\$8,500
Te Aroha & District Museum Society	\$3,000
Te Aroha Amateur Athletic and Harrier Club	\$500
Te Aroha and District Senior Citizens' Association	\$1,000
Te Aroha Arts Centre	\$500
Te Aroha Cobras Junior Soccer Club	\$350
Te Aroha Community Patrol	\$350
Te Aroha Kindergarten Association	\$500
Te Aroha Playcentre	\$500
Te Aroha Social Services	\$4,000
Te Aroha Springs Community Trust	\$1,000
Te Aroha Swimming Club	\$350
Waitoa Bowling Club	\$1,500
TE AROHA TOTAL	\$35,900

TE AWAMUTU GROUPS

Citizens Advice Bureau - Te Awamutu	\$3,000
Frontiers	\$1,000
Kainga Aroha Society	\$15,000
Kihikihi Bowling Club	\$750
Kihikihi Police House Restoration Charitable Trust	\$1,000
Kihikihi Pony Club	\$350
Kihikihi Waikato Eventing	\$5,000
Koromatua Pony Club	\$350
Ngutunui Enviro School	\$500
Pirongia Historic Visitor Centre Te Whare Taonga o Ngaa Rohe o Arekahanara	\$500
Pirongia Residents and Ratepayers Association	\$1,000
Pokuru Hall Association	\$1,000
Rosetown Community Services Trust	\$5,000
Rosetown Senionet	\$350
Royal New Zealand Plunket Society - Waipa (Te Awamutu)	\$500
Showjumping Waikato	\$500
Te Awamutu BMX Club	\$9,000
Te Awamutu Brass Band	\$500
Te Awamutu Competitions Society of the Performing Arts	\$500
Te Awamutu Little Theatre	\$500
Te Awamutu Music Federation	\$350

Te Awamutu Rowing Club	\$500
Te Awamutu Rugby Sports and Recreation Club	\$25,000
Te Awamutu Safer Community Charitable Trust	\$1,000
Te Awamutu Sports Cycling Club	\$500
Te Awamutu Stroke and Elderly Support	\$350
Te Awamutu Vision Impaired Group	\$350
Wharepuhunga Playcentre	\$350
TE AWAMUTU TOTAL	\$74,700

TE KUITI GROUPS

Aria Primary School	\$1,000
Aria Tennis Club	\$1,000
Citizens Advice Bureau - Te Kuiti	\$3,000
Mahoenui Hall Committee	\$1,000
Mairoa Hall Society	\$1,000
Maniapoto Family Violence Intervention Network	\$1,000
Maniapoto Maori Trust Board	\$70,000
Maniapoto Maori Wardens Charitable Trust	\$1,500
Mapiu Sports and Recreation Committee	\$1,500
New Zealand Society of Genealogists - Te Kuiti Branch	\$350
Piopio Amateur Swimming Club	\$500
Piopio Bowling Club	\$350
Piopio Memorial Hall Committee	\$500
Piopio Playcentre	\$350
RNZSPCA - Te Kuiti Branch	\$1,500
SeniorNet Te Kuiti	\$500
Te Ahoroa Marae	\$5,000
Te Kuiti & District Historical Society	\$1,000
Te Kuiti Amateur Swimming Club	\$500
Te Kuiti Community Childcare Centre	\$1,000
Te Kuiti Community House Trust	\$8,000
Te Nehenehenui	\$10,000
Te Piruru Papakaianga Marae	\$1,000
Waitanguru Hall Society	\$1,500
Waitomo Support Centre	\$3,000
TE KUITI TOTAL	\$116,050

THAMES GROUPS

Bella Street Pumphouse Society	\$1,000
CAPS Hauraki	\$30,000
Citizens Advice Bureau - Thames	\$2,000
Coromandel Heritage Trust *	\$55,000
Ebenezer Community Trust	\$12,000
Eco-Trust 2000 Trust	\$2,500
Hauraki Safety Network	\$10,000
Kauaeranga Valley Christian Camp	\$5,000
Kauaeranga Valley Hall Society	\$500
Matai Whetu Marae	\$3,000
Ngati Hako Te Kotahitanga Marae Trust	\$2,500
People Relying On People (PROP)	\$3,500
Stepping Out Hauraki	\$7,000
Te Whangai Trust	\$20,000
Te Whariki Manawahine O Hauraki Women's Refuge	\$25,000
Thames Aglow Fellowship	\$350
Thames Amateur Swimming Club	\$500
Thames Blokart Club	\$500
Thames Bowling Club	\$500
Thames Citizens Band	\$500
Thames Information Centre	\$2,000
Thames Museum Society	\$500
Thames Music Group	\$350
Thames Tennis Club	\$500
Thames Valley Motorcycle Club	\$1,000
Thames Women's Centre Trust	\$5,000
Thames Youth Centre	\$10,000
Thames/Hauraki Health and Disability Resource Centre Trust	\$5,000
Tourism Coromandel	\$1,500
Tracks Charitable Trust Board	\$1,000
Waiotahi Trust	\$7,500

THAMES TOTAL**\$215,700****TOKOROA GROUPS**

Citizens Advice Bureau - Tokoroa	\$5,000
Cook Island Wardens - South Waikato	\$1,000
Diabetes New Zealand South Waikato	\$350
Mangakino Community Agency	\$12,000
Mangakino Family Services	\$5,000
Mangakino Rugby League	\$500
Marotiri Hall Trust	\$3,000
South Waikato Artspace Trust	\$10,000
South Waikato District Council	\$500,000
South Waikato Extra Education Trust	\$1,000
South Waikato Living Without Violence Trust	\$7,000
South Waikato Music Society	\$500
South Waikato Pacific Island Health Committee	\$4,000
South Waikato Safer Community Council	\$3,000
South Waikato YMCA	\$15,000
Sports and Leisure Association - Mangakino	\$5,000
Tokoroa Agricultural and Pastoral Association	\$1,000
Tokoroa Amateur Athletic and Harrier Club	\$350
Tokoroa Amateur Swimming Club	\$500
Tokoroa Community Foodbank Trust	\$3,500
Tokoroa Community Services Elim Church Trust	\$1,000
Tokoroa Council of Social Services	\$15,000
Tokoroa Kart Club	\$1,500
Tokoroa Netball Centre	\$5,000
Tokoroa Over 60's Club	\$350
Tokoroa Senior Citizens and Welfare Centre	\$3,000
Tokoroa Tennis Club	\$1,500
Whakamaru Playcentre	\$3,000

TOKOROA TOTAL**\$608,050**

DONATIONS 2011/2012

WAIHI GROUPS

Christians Against Poverty	\$1,000
Citizens Advice Bureau - Hauraki	\$2,000
GO Waihi	\$1,000
Goldfields Railway	\$3,000
Sport N Action Waihi Charitable Trust	\$3,000
Trust Waikato Waihi Beach Lifeguard Services	\$18,000
Trust Waikato Whiritoa Surf Lifesaving Club	\$5,000
Waihi Arts Centre and Museum Association	\$2,000
Waihi Bowling Club	\$500
Waihi Community Marae	\$1,500
Waihi Community Radio	\$1,000
Waihi Community Resource Centre	\$20,000
Waihi District Walkways	\$5,000
Waihi Drama Society	\$1,000
Waihi Family Life Trust	\$5,000
Waihi Golf Club	\$500
Whiritoa Library	\$350
WAIHI TOTAL	\$69,850

WHANGAMATA GROUPS

Dominion Welsh Corgi League	\$350
Pauanui Preschool	\$1,000
Returned and Services Association - Whangamata	\$1,000
Tairua Care and Friendship Club	\$3,000
Tairua History Group	\$500
Tairua Information and Community Services Society	\$4,000
Toy Library - Whangamata Baptist Community	\$1,000
Trust Waikato Onemana Beach Rescue	\$5,000
Trust Waikato Whangamata Surf Lifesaving Club	\$20,000
Whangamata Bowling Club	\$500
Whangamata Community Services Trust	\$22,000
Whangamata Croquet Club	\$500
Whangamata Golf Club	\$1,000
Whangamata Public Relations	\$2,000
Whangamata Rugby and Sports Club	\$1,000
Whangamata Summer Festival	\$4,000
WHANGAMATA TOTAL	\$66,850

WHITIANGA GROUPS

Ferry Landing Library	\$350
Mercury Bay Community Patrol	\$350
Mercury Bay Health Support Group	\$1,500
Mercury Bay Indoor Bowling Club	\$350
Mercury Bay Museum Trust Board	\$1,000
Trust Waikato Hot Water Beach Lifeguard Service	\$5,000
Whitianga Community Services Trust	\$30,000
Whitianga Senior Citizens Club	\$500
WHITIANGA TOTAL	\$39,050

GRAND TOTAL \$7,088,150



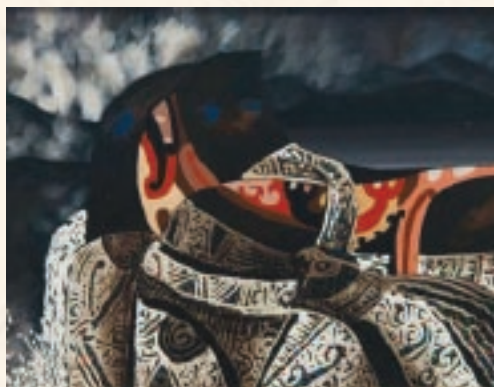
PRESERVING ART AND TAONGA

Trust Waikato is committed to preserving the rich cultural and artistic heritage of our region. Art and taonga are important symbols of who we are and where we have come from. Through our art purchasing policy we can ensure that significant, precious art works are able to remain in the region to be enjoyed by us all.

The Collection of nearly 200 objects is housed and exhibited at the Waikato Museum in Hamilton, ensuring the objects are properly conserved in museum conditions and that communities have ongoing access to their taonga.

Over the past year, the following pieces were added to the Collection:

- *Korowai* (Cloak), woven flax, pre-1865 (textile)
Artist unknown
- *Portrait of a Hauraki Maori Rangatira* (photograph)
Foy Brothers
- *Paul Chief Hauraki* - portrait of a Hauraki Maori Rangatira (photograph)
Artist Unknown
- *Tuterei Karewa*, Chief of Ngatimaru Tribe, Hauraki Gulf (painting)
Horatio Gordon Robley
- *Lunch Break* (painting)
Garth Tapper
- *The King Country* (painting)
Peter McIntyre
- *Passing Waters of Time (Taupo's Gift)* and *Huka Falls, Taupo Region* (paintings)
Buck Nin



Passing Waters of Time (Taupo's Gift)
Buck Nin



Huka Falls, Taupo Region
Buck Nin

Recently the Collection has become available to view online at the Waikato Museum's website www.waikatomuseum.co.nz. It can also be accessed from the Trust website www.trustwaikato.co.nz through a link on our art and taonga page. Pieces will continue to be added to the online catalogue over the coming months.



TRUST WAIKATO

TE PUNA O WAIKATO

Holidays in Huntly, the brick caravan by ceramic artist Peter Lange, was added to the Trust Art and Taonga Collection in May 2010. The caravan fits perfectly with the Trust's goal of making art works accessible throughout the region to be enjoyed by us all. Living the life of a 'real' caravan, it has been travelling across the region for the past 18 months.

